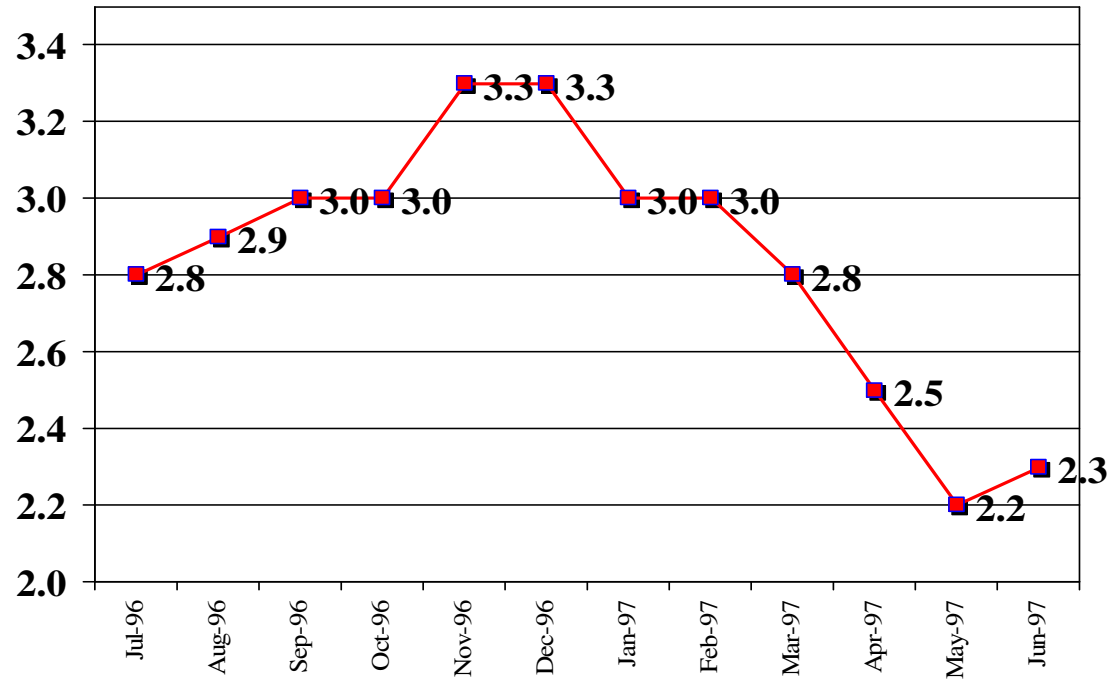


# CPI - U

## Fiscal 1996-97



	Jul-96	Aug-96	Sep-96	Oct-96	Nov-96	Dec-96	Jan-97	Feb-97	Mar-97	Apr-97	May-97	Jun-97
■ % Change from 1 year ago	2.8	2.9	3.0	3.0	3.3	3.3	3.0	3.0	2.8	2.5	2.2	2.3
■ Actual Points	157.1	157.3	157.8	158.3	158.6	158.6	159.1	159.6	160.0	160.2	160.1	160.3

Source: BLS CPI Hotline Detroit (313) 226-7558  
 Fiscal Year = July 1 through June 30  
 Not seasonally adjusted, U.S. city average, all items, base period 1982-84 = 100.